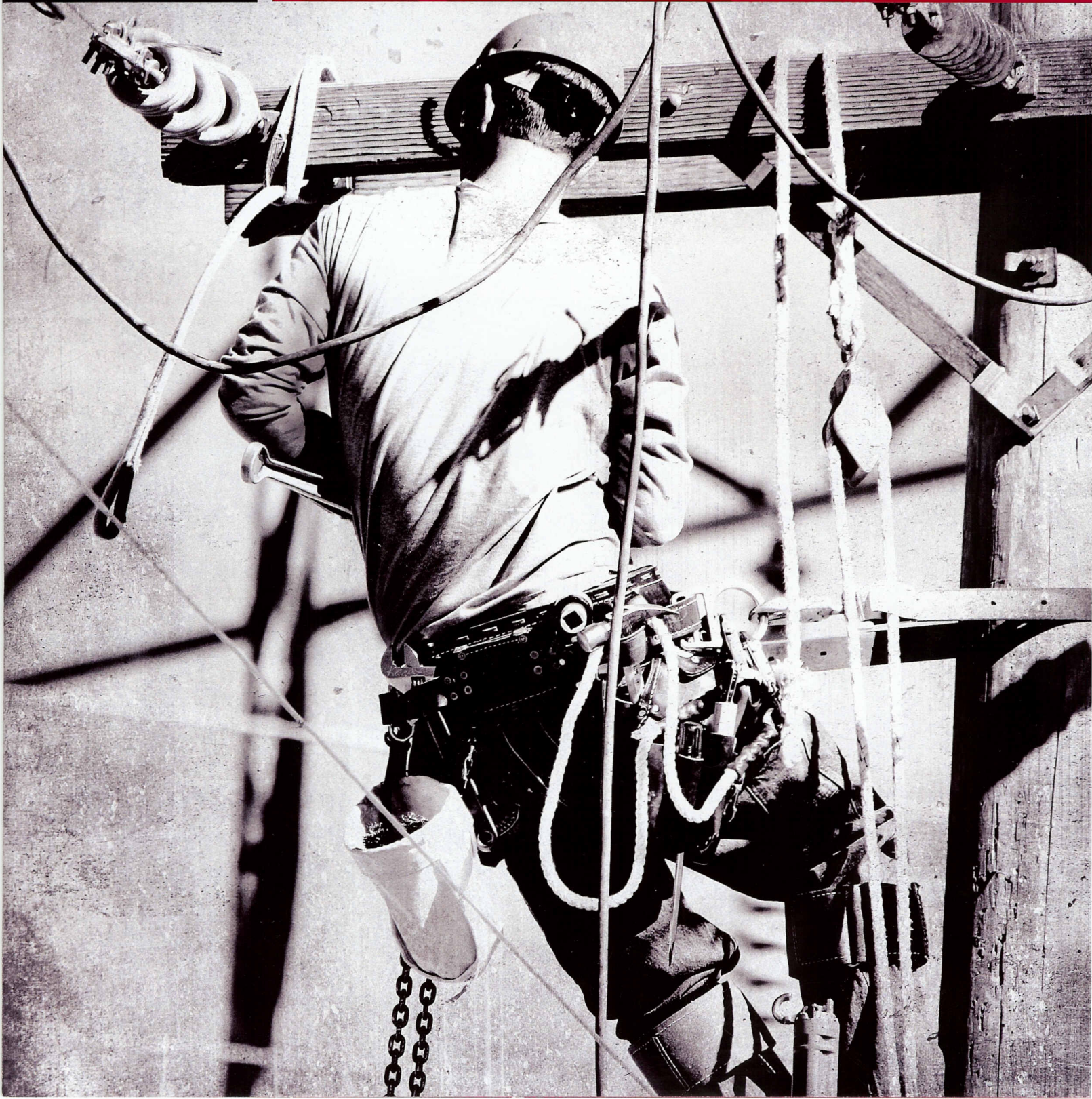




INDUSTRIAL





DRIFIRE®

POWERED BY  drirelease®

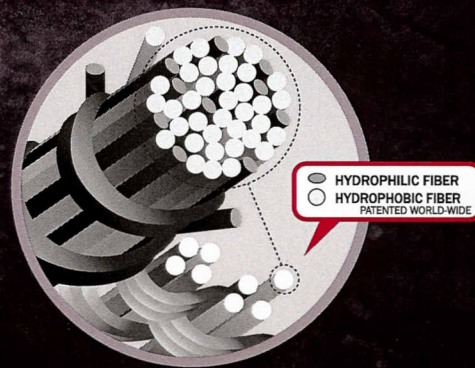
WE DRESS HEROES IN THE FIELD LIKE THEY'RE HEROES ON THE FIELD.

DRIFIRE® was the first FR wear manufacturer to utilize drirelease®, the same patented, optimal wicking and drying fabric technology used by the world's premier athletic brands to create high-performance apparel. From the goal line of the Rose Bowl to the command posts of the Korengal Valley, no other fabric technology can outperform drirelease®.

What is drirelease®?

drirelease® is the patented, optimal blend of hydrophobic (water-hating) and hydrophilic (water-loving) fibers used to create apparel that wicks moisture away from the skin and dries fast, managing sweat and discomfort.

By incorporating drirelease® technology into its fabrics, DRIFIRE® can deliver permanent flame resistant apparel that outperforms other FR garments, wash after wash and wear after wear.



FIELD REPORTS

These are great shirts. Here in Iowa, it gets mighty cold. **HEAVYWEIGHT SHIRTS ARE A MUST FOR ANYONE WORKING OUTDOORS.**

Jerald P.
Des Moines, IA

The weather was 80°, partly sunny, very humid, very hot and **I WAS SURPRISED BY HOW QUICKLY YOUR T-SHIRT DRIES.**

Industrial Safety Wear Trial

This is the most comfortable t-shirt I have ever worn! **IT IS LIGHT & COOL IN THE WARM WEATHER YET IT IS WARM IN THE COOL WEATHER.** It feels like I'm not wearing a shirt at all. Thank you for a great product.

SFC Martin, Jared D.
C CO 1-140th ASSLT
Fat Cats

I was doing a land navigation out on Fort Benning... about 4-5 hours looking for points in and out of the bush. I was wearing your base layer shirt... After I was done, I took my gear off and no ****, I was actually dry! **THE ONLY REASON MY OUTER LAYER WAS ALL WET FROM SWEAT WAS BECAUSE I DIDN'T HAVE ONE THAT WAS MADE FROM THE DRIFIRE.**

Your shirt worked just like you said.

SGT Martinez
US Army Squad Leader

This shirt is the lightest FR shirt I have seen! (and I've had quite a few working in the oil and natural gas industry). **IT SEEMS TO BREATHE A LITTLE BETTER THAN OTHERS, ALTHOUGH, IT IS STILL FR WITHOUT A DOUBT.**

Daniel M.
Mineola, TX

INDUSTRIAL

HRC 1



SHORT SLEEVE TEE

Lightweight: DF2-CM-446TS
ASTM F1506; NFPA 70E; Ebt 4.5 cal/cm²



BOXER BRIEF

Lightweight: DF2-CM-446BB
ASTM F1506; NFPA 70E; Ebt 4.5 cal/cm²



LONG SLEEVE TEE

Lightweight: DF2-CM-446LS
ASTM F1506; NFPA 70E; Ebt 4.5 cal/cm²



Midweight: DF2-CM-260ALS
ASTM F1506; NFPA 70E; Ebt 5.2 cal/cm²



LONG JOHN

Lightweight: DF2-CM-446LP
ASTM F1506; NFPA 70E; Ebt 4.5 cal/cm²

Midweight: DF2-CM-260ALP
ASTM F1506; NFPA 70E; Ebt 5.2 cal/cm²



HOT WEATHER BALACLAVA

Midweight: DF2-560HB
ASTM F1506; NFPA 70E; Ebt 5.4 cal/cm²



SPORTS BRA & BOY SHORT

Sports Bra: DF2-559SB
ASTM F1506; NFPA 70E; Ebt 4.4 cal/cm²



Boy Short: DF2-559BS
ASTM F1506; NFPA 70E; Ebt 4.4 cal/cm²





PERMANENT
FLAME RESISTANCE



MOISTURE
MANAGEMENT



ANTIMICROBIAL
TO RESIST ODOR



HRC 2



ANSI CLASS 3 HI-VIZ UTILITY SHIRT

DF2-AX3-324LS
ASTM F1506; NFPA 70E;
ATPV 12.1 cal/cm²; ANSI 107



ANSI CLASS 3 HI-VIZ LONG SLEEVE SHIRT

DF2-AX3-265ALS
ASTM F1506; NFPA 70E;
Ebt 8.7 cal/cm²; ANSI 107



UTILITY SHIRT

DF2-324LS
ASTM F1506; NFPA 70E;
ATPV 12.1 cal/cm²



MOCK ZIP FLEECE

DF2-277MZ
ASTM F1506; NFPA 70E;
Ebt 13.2 cal/cm²



LONG SLEEVE TEE

Heavyweight: DF2-CM-265ALS
ASTM F1506; NFPA 70E;
Ebt 8.7 cal/cm²



LONG JOHN

Heavyweight: DF2-CM-265ALP
ASTM F1506; NFPA 70E;
Ebt 8.7 cal/cm²



COLD WEATHER BALACLAVA

Heavyweight: DF2-560CB
ASTM F1506; NFPA 70E;
Ebt 12.7 cal/cm²

